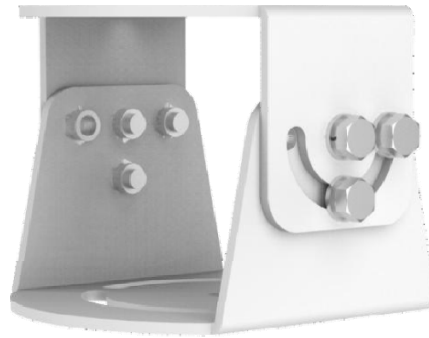


TR-UV06-C-IN Multi-sensor Panoramic Camera 2D Bracket Mount



Specifications

Bracket	TR-UV06-C-IN
Application	Indoor or outdoor, pole or rail installation
Dimensions	116.9mmx101.0mmx83.0mm(4.6" x 4.0"x 3.3")
Weight	0.28kg (0.62lb)
Material	Aluminum alloy

Dimensions

